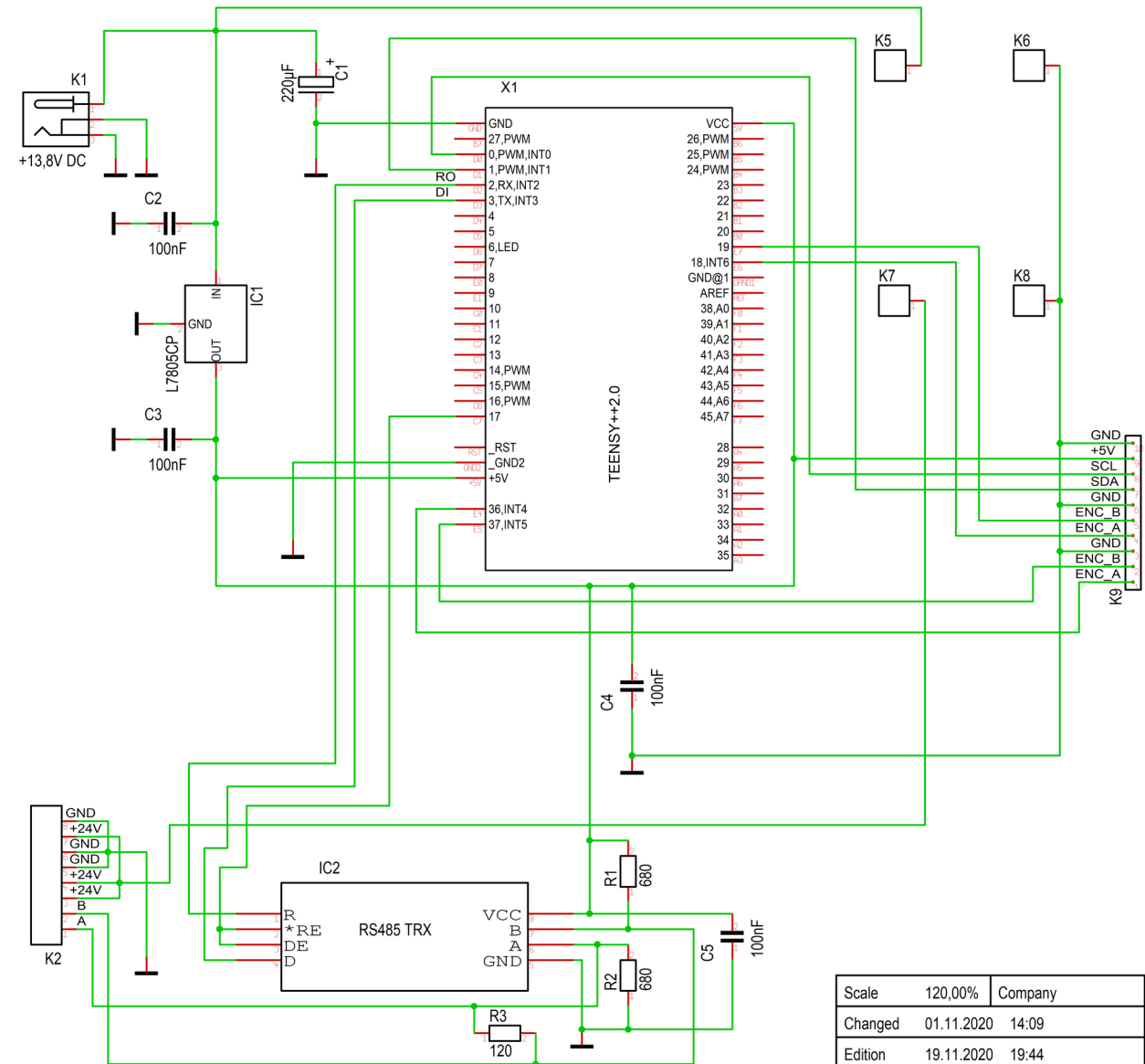


## Schematic of Controller



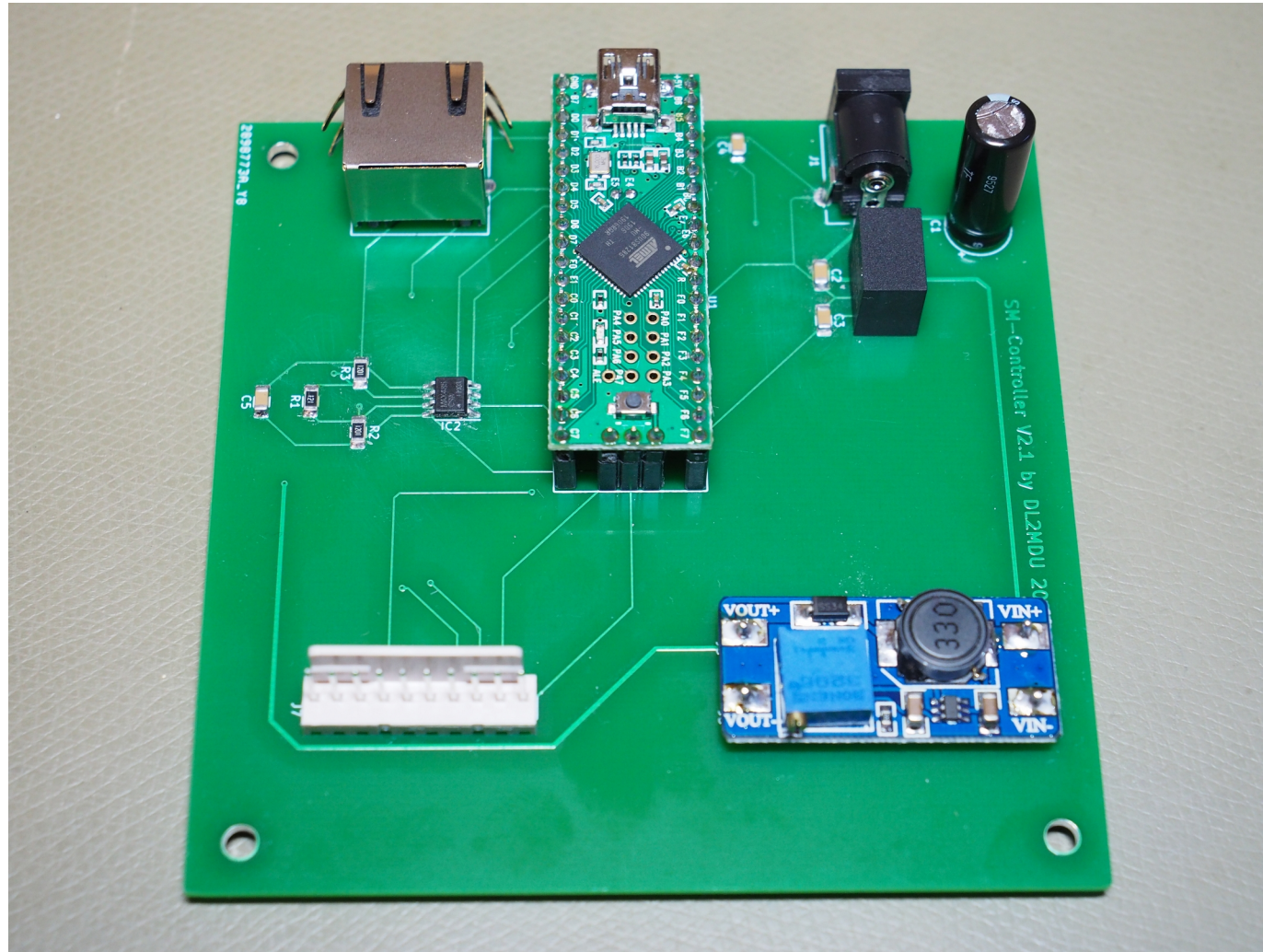
Scale	120,00%	Company	Drawn: Ch. Friess	Sheet 1 of 1
Changed	01.11.2020	14:09	Title: S-Match Controller 2.0 by DL2MDU	
Edition	19.11.2020	19:44		
File	SMC_V2_0.T3001		Project: Remote S-Match Coupler	

# S-Match Coupler

Controller  
with Teensy++2.0

and DC/DC Converter  
(blue PCB)

10-pin Conector to  
LCD and Encoder



# S-Match Coupler

View to the front of  
controller





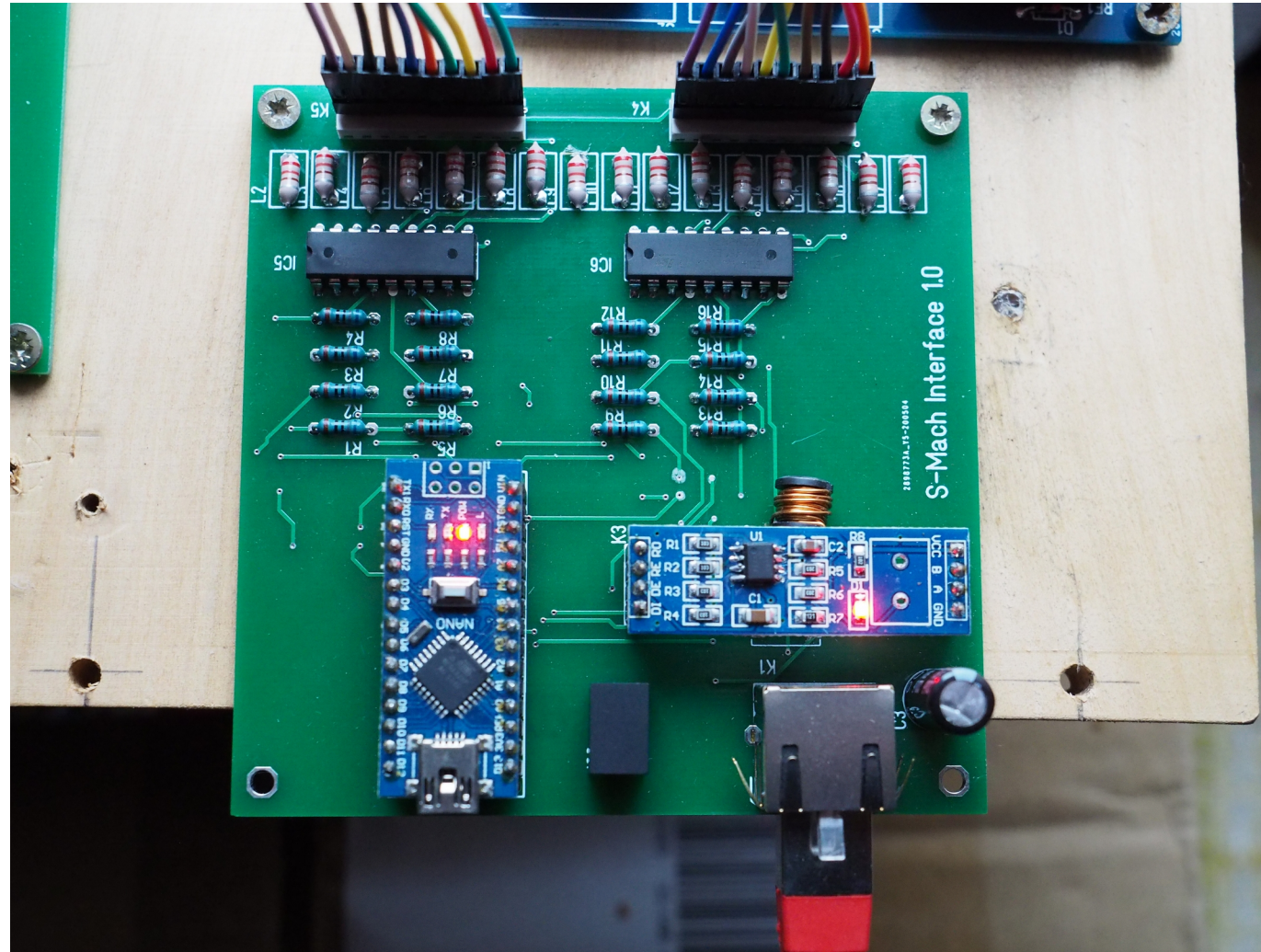
# S-Match Coupler

Interface-PCB with  
Arduino NANO

PCF8574T I2C Port  
Expander at Bottom

ULN 2803 Driver

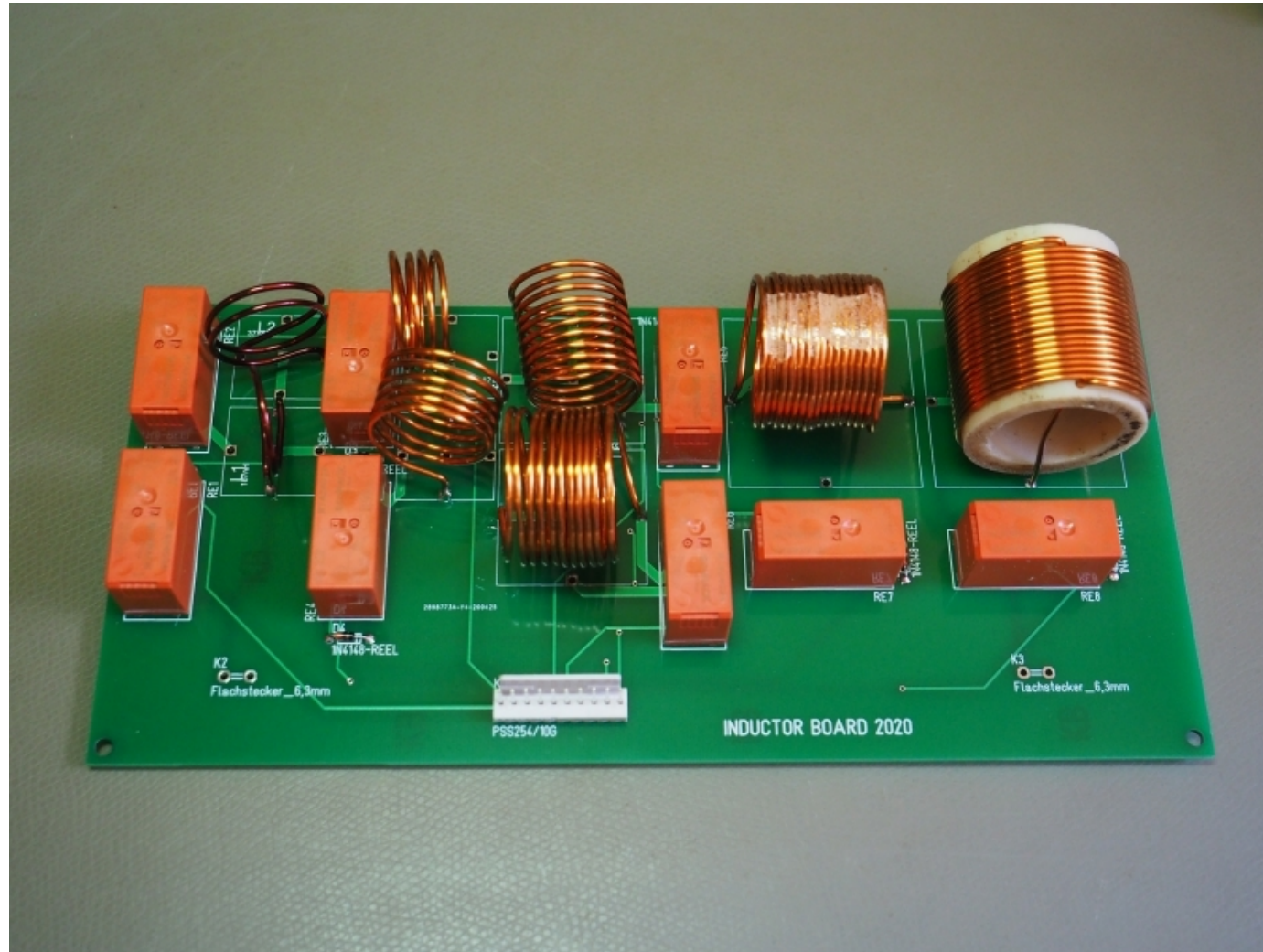
RS485 / TTL Converter





# S-Match Coupler

Inductor Board with  
8 Coils - 91nH, 187nH,  
375nH, 750nH, 1,5 $\mu$ H,  
3 $\mu$ H, 6 $\mu$ H and 12 $\mu$ H



# S-Match Coupler

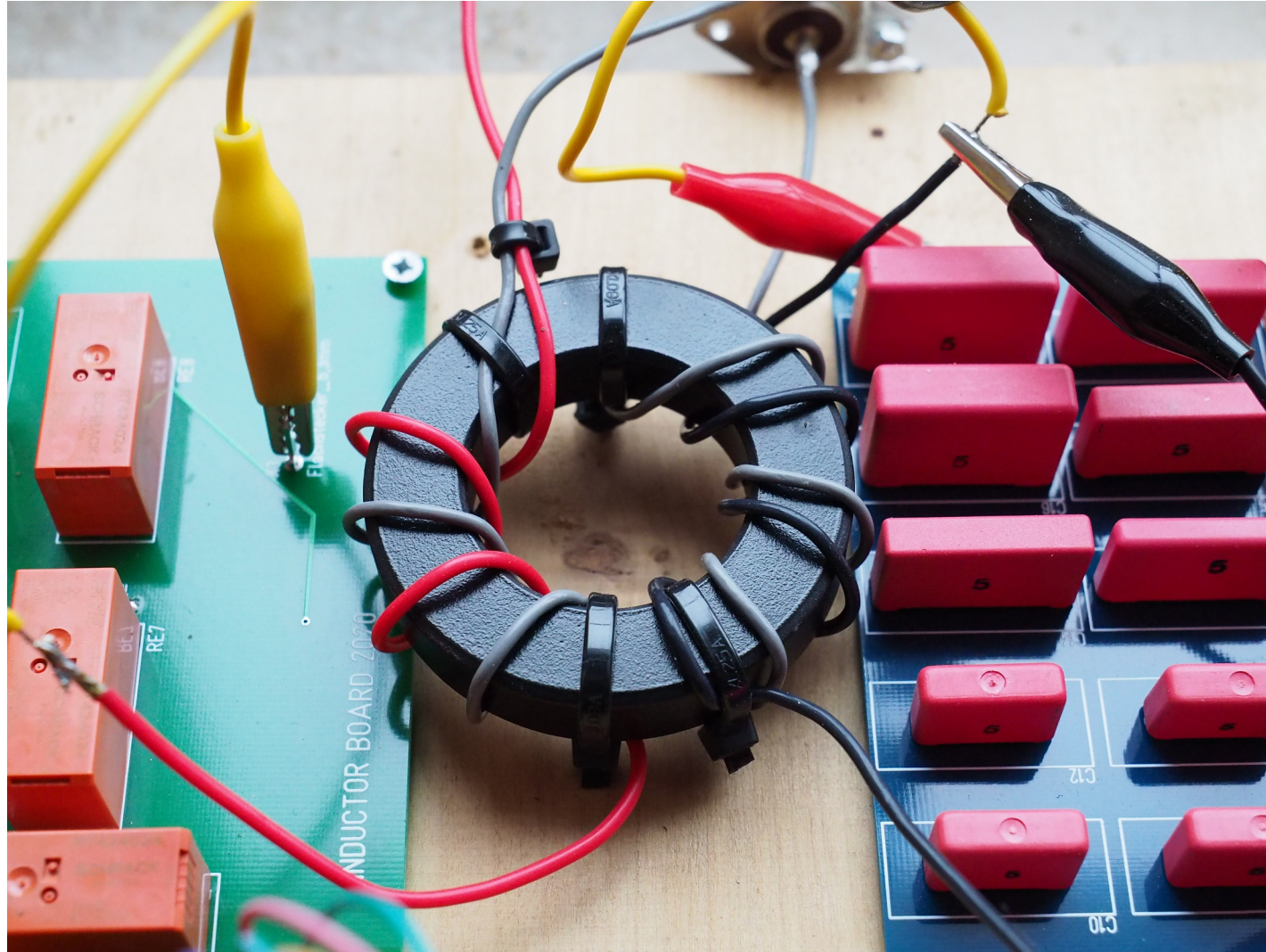
Capacitor PCB





# S-Match Coupler

BALUN/Transformer  
with PTFE isolated  
wires



# Overall Diagram Of The S-Match Coupler

